

Harbourfront-CityPlace

Toronto, Ontario · Generated Jun 24, 2026 · signalhood.ca

“ Everything you need to know about Harbourfront-CityPlace.

WALK SCORE

94/100



BIKE SCORE

91/100



TRANSIT SCORE

100/100



SAFETY INDEX

6/10



Market Snapshot

A quick read on current neighbourhood activity.

\$688K

MEDIAN PRICE

31

ACTIVE

31

NEW / WEEK

\$1,050

\$/SQ FT

MONTHLY CARRY

20% down, 4.79%

~\$3,767/mo

Buyer takeaway: Understanding the local market dynamics — entry points, premium drivers, and inventory patterns — is key to timing your move in Harbourfront-CityPlace.

SIGNALHOOD READ

Harbourfront-CityPlace offers a distinct neighbourhood identity within the broader Mississauga market. Understanding local pricing dynamics and lifestyle tradeoffs is key to making the right decision.

Schools

Schools, ratings, programs, and walk times.

SCHOOL	TYPE	RATING	WALK	PROGRAMS
--------	------	--------	------	----------



School access

Nearby schools, programs, and daily routines.

Commute Times

Drive and transit access from Harbourfront-CityPlace.

DESTINATION	DRIVE	TRANSIT
Drive and transit times from this neighbourhood.		

Demographics

Median Age

0

Median Income

\$0

Owner-Occupied

0%

16

RESTAURANTS
& CAFES

8

PARKS &
GREEN
SPACES

What Your Budget Gets You

Entry points and price tiers in Harbourfront-CityPlace.

STARTER

Under \$550K

Condos — the most accessible way into the neighbourhood.

MID-RANGE

\$550K - \$800K

Condos — the heart of the local market.

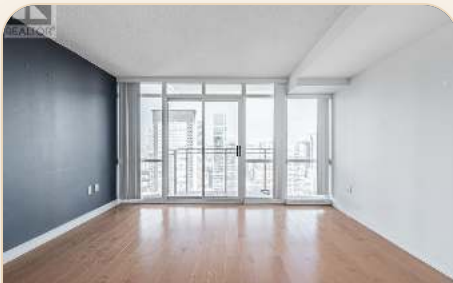
PREMIUM

\$800K+

Condos and townhomes — the largest and most premium homes.

Available Now

Active listings as of Jun 24, 2026.



\$449,000

5005 - 11 BRUNEL COURT

1 bed · 1 bath · Apartment



\$865,000

705 - 251 QUEENS QUAY W

1 bed · 1 bath · Apartment



\$1,688,000

7706 - 3 CONCORD CITY PLACE WAY

3 bed · 2 bath · Apartment

RENTAL SNAPSHOT

Avg. 1-Bedroom **\$2,452/mo**

Avg. 2-Bedroom **\$3,242/mo**

HOW HARBOURFRONT-CITYPLACE COMPARES

	HARBOURFRONT-CITYPLACE	AGINCOURT NORTH	AGINCOURT SOUTH-MALVERN WEST
Median Price	\$688K	\$539K	\$500K
Walk Score	94	86	87
Top School	—	—	—

HARBOURFRONT-
CITYPLACE

AGINCOURT
NORTH

AGINCOURT
SOUTH-
MALVERN
WEST

To
Downtown

—

—

—

You've done the research.



Now talk to someone who lives it.

Scan to connect with hand-selected Harbourfront-CityPlace experts — streets to watch, homes worth seeing, and whether this neighbourhood fits your life.



Scan now

Connect with local experts in 30 seconds.